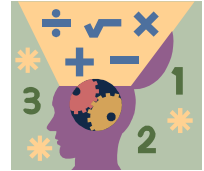


Seed of Life Institute Presents...



## Contact and Consciousness Workshop

*An Advanced Training to Explore and Initiate  
Interdimensional and Extraterrestrial Contact  
as a Path Toward Consciousness Evolution*

**Facilitated by Trance Channel and Author  
Lyssa Royal Holt**

**May 5-6, 2012 – Foster, RI**  
(Location is on the border of RI & CT)  
Saturday 10-5:30, 7:30-10 and Sunday 10-5

### The Core Principles of this Event

Human evolution is moving at a rapid rate and soon our technology will, without a doubt, bring us face-to-face with the reality of life beyond our Earth in its myriad forms. Before that happens, we as a species can facilitate a smooth transition into a universal community through preparedness, and an understanding of human consciousness as it encounters the new paradigm of extraterrestrial and/or interdimensional intelligence.

In this weekend exploration, we move beyond the idea of whether extraterrestrial or interdimensional life exists. Instead, we embrace the idea that it does, and explore how we as humans can create a common ground upon which two 'alien' species can meet. Upon that common ground, how do we reach out? And furthermore, how does the human consciousness react to such a shift in reality and perception? We will explore this and much more during this rare opportunity to work with Lyssa Royal Holt, who is a world renowned author, channel, and consciousness researcher who has been working in the field of extraterrestrial and consciousness research for well over 20 years.

### What Will Be Included

While we will explore many topics too numerous to name, these are some of the highlights:

- A night of field work under the stars (weather permitting)
- Experiential exercises designed to prepare the human consciousness for contact
- Lectures and channeling from Lyssa
- Exploring the human ego and its response to contact
- Trainings in field work and contact protocol
- The importance of contact and planetary evolution
- The relationship between orbs and contact
- Evolving the mythology of contact, and much more.

*Due to the nature of channeling, many surprises often occur that cannot be listed here! To some degree, the curriculum will be adjusted based on the experience of participants in working with Lyssa and the high level of energy during this work. No two workshops are alike.*

**A Note about Our Work:** *Lyssa's approach to contact research emphasizes that the participant evolve beyond the polarized thought of "good guys" and "bad guys." We are all ambassadors and therefore our personal belief systems and judgments must not be a part of the contact process. In fact, for the contact process to be successful and fulfilling, we must move beyond these limiting belief systems. For over 20 years, Lyssa has worked with the same group of extraterrestrials and interdimensional entities who have guided her research and every group has been completely safe while doing this work. Individuals with a high level of fear about this work, or who see some ETs as "bad" and others as "good" should think carefully about whether this work is right for them at this time. Group consciousness is a key element in contact work and if there are participants with polarized beliefs or a high degree of fear, it can negatively affect the entire group.*

*In addition, it is important for participants to examine their motivations for participating in a retreat such as this. If it is purely to see a UFO, obtain evidence that ETs exist, or for any reason other than connecting joyfully with universal life and exploring the nature of consciousness, this retreat is probably not right for you. For those of you who are excited to be pioneers in the field of contact research, we hope you will join us!*



**Suggested Reading:** Lyssa's book *Preparing for Contact* is suggested to be read before the retreat. A new edition has just been released with all new material. You can purchase it through [www.lighttechnology.com](http://www.lighttechnology.com). You may also review articles on our web site that refer to the issue of contact work at [www.lyssaroyal.com/articles.htm](http://www.lyssaroyal.com/articles.htm). More is located at [www.lyssaroyal.com/et.htm](http://www.lyssaroyal.com/et.htm) and a list of field reports is also located at [www.lyssaroyal.com/field.htm](http://www.lyssaroyal.com/field.htm).

### **About the Retreat Location**

**Local Coordinator:** Local coordinator is Joy Poland, at [joyppoland@aol.com](mailto:joyppoland@aol.com), (401) 714-7123. Contact her for information about the location (see info below), places to stay, directions, and other details. (She is *not* handling payment).

**What to Bring:** In addition to the usual workshop items like a **notebook**, **pens**, and personal things such as your favorite meditation cushion, we do suggest that you prepare yourself for outdoor activity at night. Nights may be cool to cold. Bring a **flashlight**, and any other items you may wish such as a comfy camp chair, and binoculars. Bring **protective shoes** (no sandals) for fieldwork in the dark, just to be safe. If you have them, fun items like star charts, EMF detectors, etc., are always welcome.

**Workshop Price:** \$299 – Includes Saturday & Sunday events, plus contact work at night. Registration is handled by Lyssa's office in Arizona. Please see registration form.

**Traveling to the Location:** The location of this event is a large private home in Foster, RI, on the border of Rhode Island and Connecticut. The closest airport is Providence, RI (T.F. Greene Airport). Hotel recommendations are provided below. The workshop and the evening outdoor contact work will be held at this home. Upon registration, directions to the location will be provided.



**Local Hotels:** Below, we offer recommendations for two hotels that are closest to the workshop location and accessible from the Providence, RI airport.

**Best Western Hotel in West Greenwich, RI:** This hotel is about 15 minutes from T.F. Greene Airport and about 25 minutes to 37 Cucumber Hill Road where workshop will be held. The hotel rooms are approximately 69.00 per night. The address is 99 Nooseneck Hill Road West Greenwich, RI 02817. Phone 401 397-5494 Fax 401 397-7185

<http://book.bestwestern.com/bestwestern/US/RI/West-Greenwich-hotels/BEST-WESTERN-West-Greenwich-Inn/Hotel-Overview.do?propertyCode=40003>

Car service is 401 265-5356 Mr. Rizzo and there is Taxi Service

### **Comfort Inn and Suites Hotel in Dayville, CT**

This hotel is about 15 minutes from 37 Cucumber Hill Road, Foster RI (workshop location) and 50 minutes from T.F. Greene Airport in Providence. The address is 16 Tracy Road, Dayville, CT 06241. Phone: 860 779-3200. Fax (860) 779-9113  
Room rates are approximately 99.00 plus tax

Car service 860 942-1752 Ben Brooks car service only - no taxi service  
<http://www.comfortinn.com/hotel-dayville-connecticut-CT141>

**Meals:** We will have breaks for lunch both days, and a break for dinner on Saturday before contact work. There are local restaurants close to the workshop location, and/or you may bring your own food to eat during meal breaks. We will have coffee, tea, small snacks, and water available during the workshop. Feel free to bring your favorite snacks.



**Lyssa Royal Holt**, a globally recognized author, channel and seminar leader will be leading this retreat. She is most known for her books that explore the extraterrestrial issue such as *The Prism of Lyra*, *Visitors from Within*, and *Preparing for Contact*, and for her grounded, authentic approach to contact research. She has been conducting research into the contact phenomenon for more than 25 years, and in the 1990s led a field research team in Phoenix, Arizona for the organization CSETI (the Center for the Study of Extraterrestrial Intelligence founded by Dr. Steven Greer). Since that time she has conducted independent research, training field teams all over the world. Most recently she has been seen on a Discovery Channel special and the TV show *Paranormal Matrix* that explores extraterrestrial contact. She lives in Arizona with her husband Ronald Holt, and continues her research. [www.lyssaroyal.com](http://www.lyssaroyal.com).

Note: See <http://www.youtube.com/watch?v=zOFSFpscNvg> for the 10-minute episode of the Paranormal Matrix TV show that highlights Lyssa's work.

### **Deadline for Registration Friday, April 20, 2012**

*After this date, we cannot guarantee that space will be available.*

*For registration information, please open or download the registration form. Thank you! And we hope to meet you in May!*

**Here are the links:**

**Quick, 1 Page Flyer: [www.lyssaroyal.com/Contact-FlyerRI.pdf](http://www.lyssaroyal.com/Contact-FlyerRI.pdf)**

**Registration Form: [www.lyssaroyal.com/Contact-RI-Reg2012.pdf](http://www.lyssaroyal.com/Contact-RI-Reg2012.pdf)**

